



Refurbished
Hitachi
**AIRIS
VENTO**
Advanced Open MRI

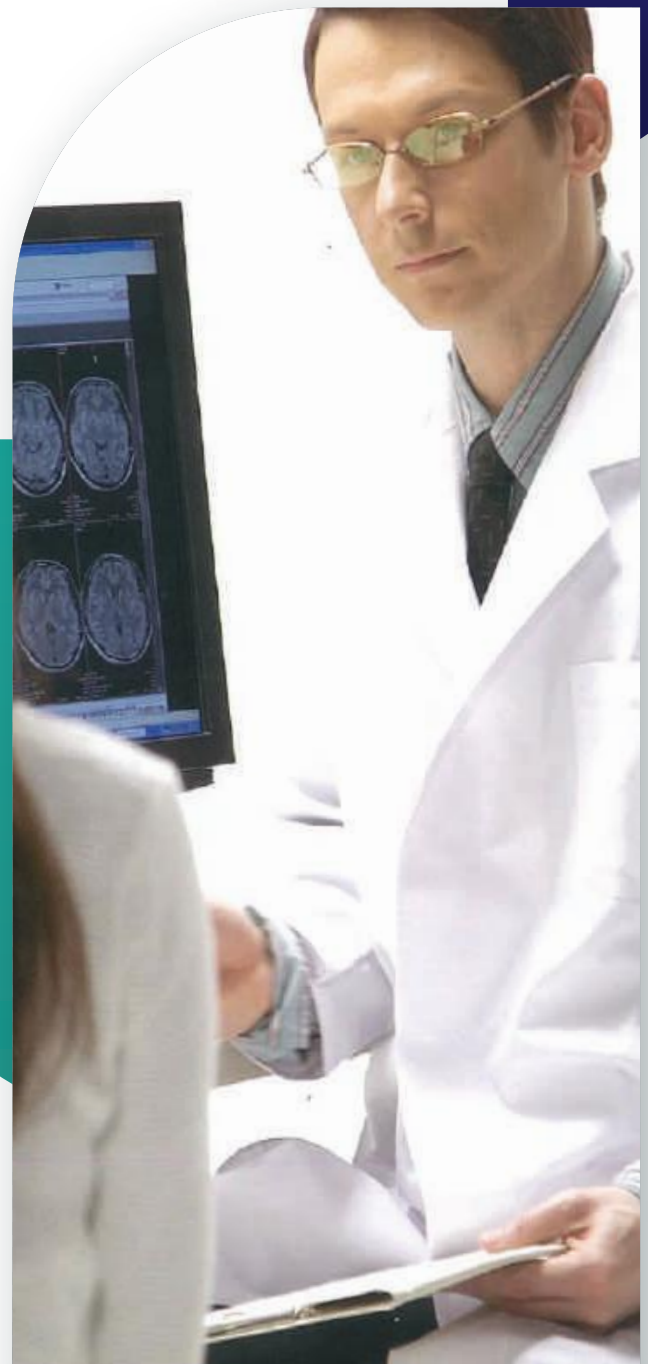
About **Arnica**

ARNICA HEALTHTECH has always been devoted to development, sales and service of medical equipment .We are not only popular in the domestic market, but we are also widely recognized across the world. With reliable quality and complete customer service, our products are popular with clients from all around the world. Our research and development wings are practicing to come up with innovative and unique medical equipment and medical supplies .We are capable of meeting the requirements of our clients. Our specialization and extensive experience in medical equipment and medical supply has propelled us to cater this product at very competitive prices.

We are committed to being very aggressive in our attitude towards quality and customer service, primarily since we want to be ranked as the "best" in our business. Quality is not just another goal; it is our basic strategy for survival and future growth. It must be clearly understood that we'll not allow quality to take second place behind cost or schedule.

About **Machine**

The AIRIS Vento Open MRI is an affordable system with an open, two-pillar design that welcomes patients of all shapes, sizes and conditions. Fast and reliable scans deliver quality images you can trust. It features a permanent magnet that needs only limited initial investment and no additional equipment such as a dedicated cooling device. It's extremely energy efficient, running strong throughout its lifetime: all of which makes this solution an attractive alternative to superconductive MRI.



Features

- Permanent magnet barely loses performance during its lifetime requiring minimum extra care.
- No cooling system and no equipment room necessary.
- Green system with a maximum 5kW power consumption for low running costs.
- Low TOC with excellent and quick return on investment.
- Open architecture with a two-pillar design for patient access from all sides.
- Flexible patient table with in-gantry movement to left and right for positioning extremities like shoulder or knee in the centre of the magnetic field.
- Customise routine protocols (even during the scan) to fit your patient and clinical needs.
- Reconstruct multiple cross-sections of complex structures from 3D imaging sequences with Curved MPR and Radial MPR.
- Remote application support to help optimise protocols, train technicians – and control the entire exam online with SENTINEL™.
- Remote maintenance support delivers automatic notification of anything suspicious via SENTINEL™ – maximising your uptime
- Many imaging features for a wide range of clinical applications, such as non-contrast angiography, diffusion, or spectral fat suppression.
- High contrast 3D reconstruction from volume data.
- High order shimming to increase uniformity of static field.
- 0.3T permanent MRI scanner with a vertical field and open two-pillar design – with a 210° opening at the front and 70° at the back.
- Strong gradient with 22mT/m max. strength and 55T/m/s max. slew rate.
- Fully motorised patient table with 225kg weight limit, 10cm left/right movement in gantry and the ability to lower to 49cm.
- Highly sensitive solenoid receiver coils – especially effective for orthopaedics.

Specifications



Brand	Hitachi
Model Name/Number	Hitachi Airis Vento
Magnetic Strength	0.3T
Machine Type	Open
Machine Condition	Refurbished
Magnet Type	Permanent
Max. Amplitude	22 mT/m
Max. Slew Rate	55 T/m/s

Applications



Neurology



Orthopedic



Pelvis



Angiography



Cardiac



Breast



Oncology



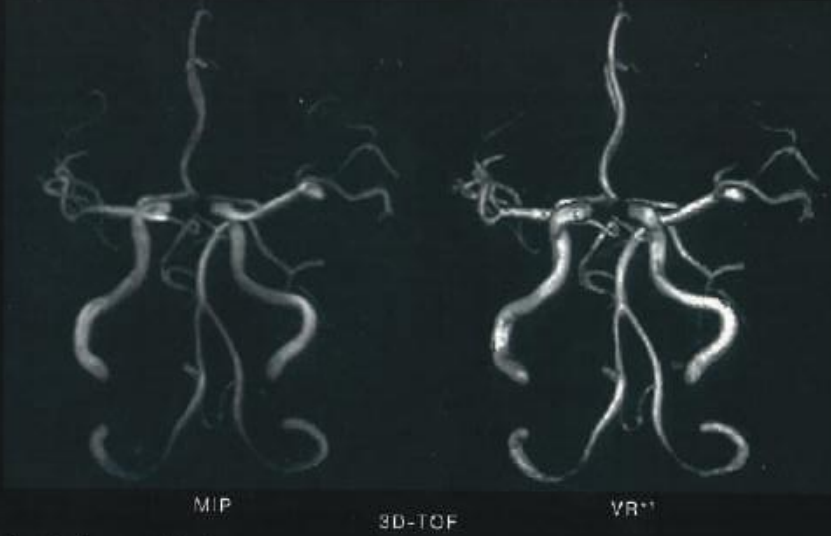
Pediatric



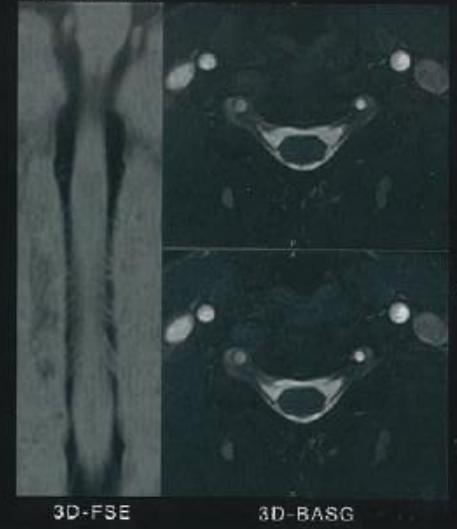
Acute cerebral infarction



MCA aneurysm



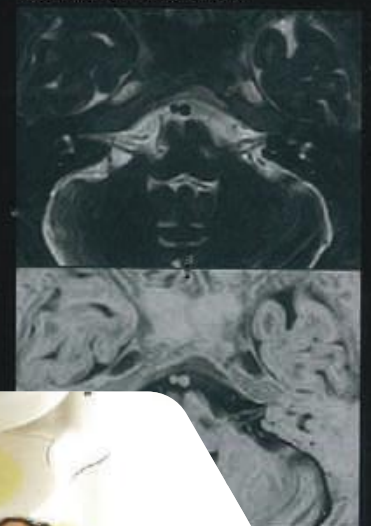
Myelography



Cervical spondylosis



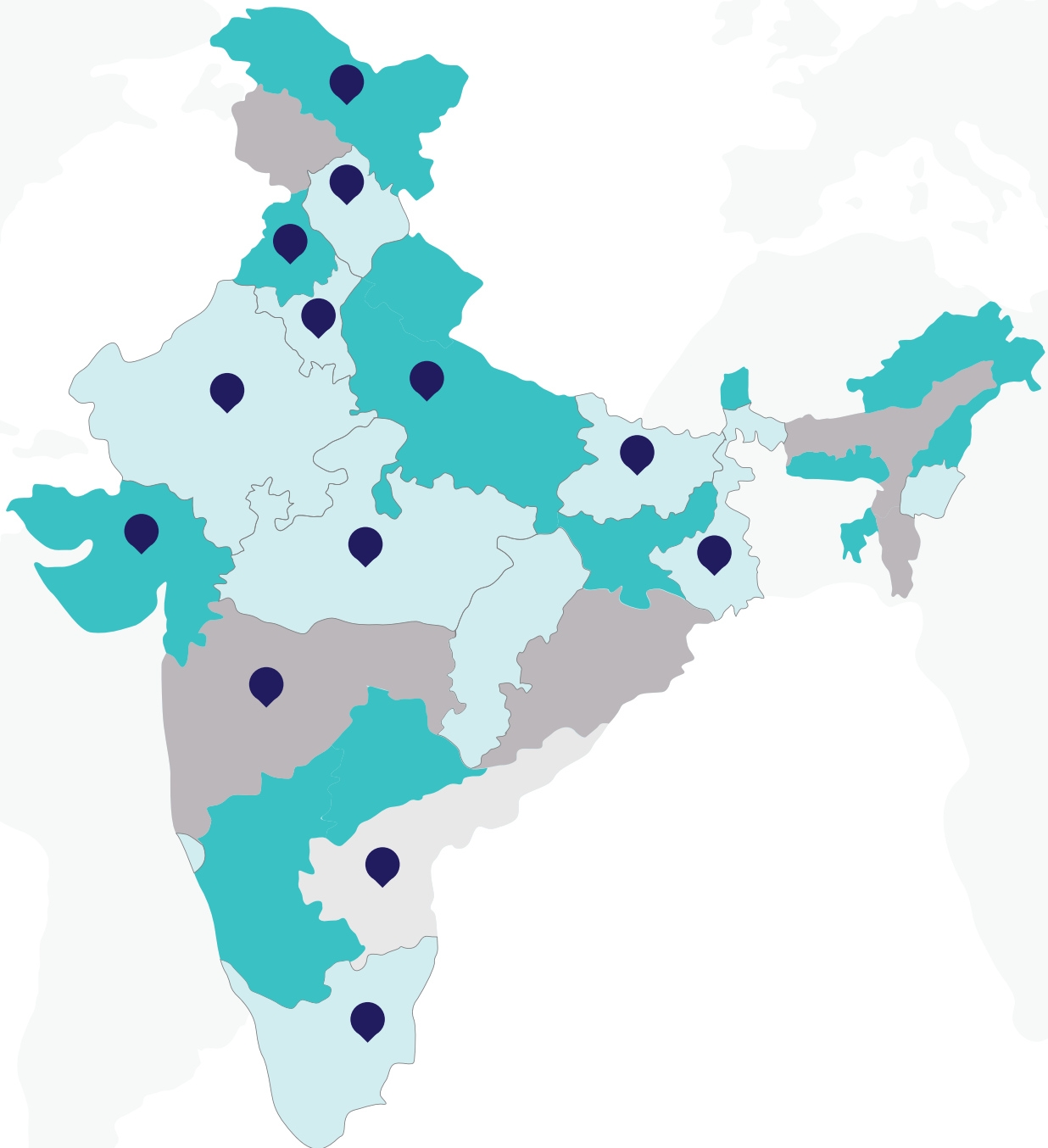
Acoustic nerve tumor



Imaging



We have Installed Our
Machines in Various
Parts of **India.**



Thank You!



Arnica HealthTech
A Healthcare Company

Get In Touch

NH-2, Parallel to Panchayat Bhawan Banchari,
Hodal, Delhi NCR, Haryana 121106

P: +91-9560507877

E: arnicahealthtech@gmail.com

w: www.arnicahealthtech.com