

Refurbished
APERTO LUCENT
Prime Open MRI



About **Arnica**

ARNICA HEALTHTECH has always been devoted to development, sales and service of medical equipment. We are not only popular in the domestic market, but we are also widely recognized across the world. With reliable quality and complete customer service, our products are popular with clients from all around the world. Our research and development wings are practicing to come up with innovative and unique medical equipment and medical supplies. We are capable of meeting the requirements of our clients. Our specialization and extensive experience in medical equipment and medical supply has propelled us to cater this product at very competitive prices.

We are committed to being very aggressive in our attitude towards quality and customer service, primarily since we want to be ranked as the "best" in our business. Quality is not just another goal; it is our basic strategy for survival and future growth. It must be clearly understood that we'll not allow quality to take second place behind cost or schedule.

About **Machine**

Hitachi Aperto Lucent combines systematic operations, efficient design and highly reproducible imaging to process information instantly, thus ensuring optimum patient comfort along with peerless functional performance. Aperto Lucent can be incorporated with new measurement functions such as primeFSE and CE-Perfusion newly developed by Hitachi for higher magnetic field MR systems. In addition, incorporation of the newly designed image reconstruction system realizes 2048x2048 image reconstruction that corresponds to high definition images.




Features

- Radar & ECC System for high quality images
- Footswitch allows table to move up and down
- Low running costs due to permanent magnet
- Open design to free from anxiety while examination
- Min. table height to get on & off with less load
- Lateral Slide for movement inside gantry



Specifications



Brand	Hitachi
Model Name/Number	Aperto Lucent
Magnetic Strength	0.4 Tesla
Machine Type	Open
Additional Details	
Magnet Type	Permanent
Max. Amplitude	25 mT/m
Max. Slew Rate	55 T/m/s
Maximum weight capacity	225 kg
Lateral table movement	±150 mm
Power Consumption	10KVA

Applications



Neurology



Orthopedic



Pelvis



Angiography



Cardiac



Breast



Oncology

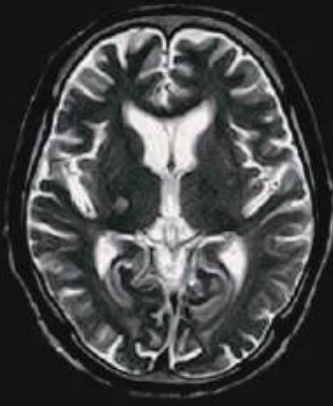


Pediatric

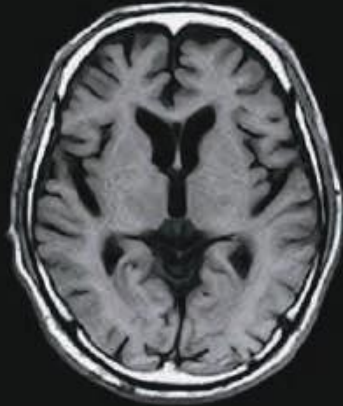


Prime imaging capabilities

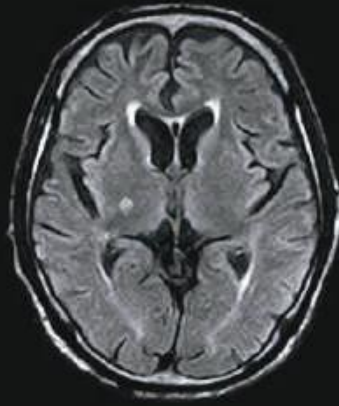
Brain [Cerebral infarction]



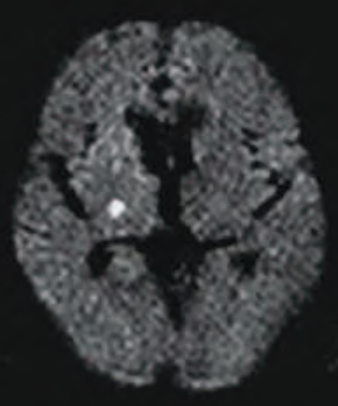
T2WI



T1WI

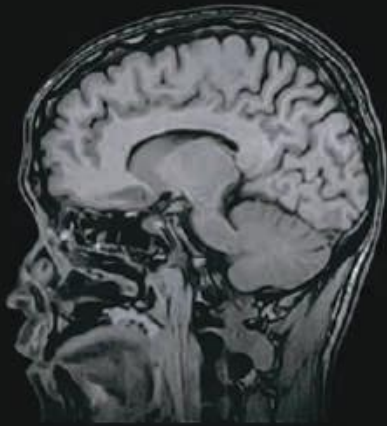


FLAIR

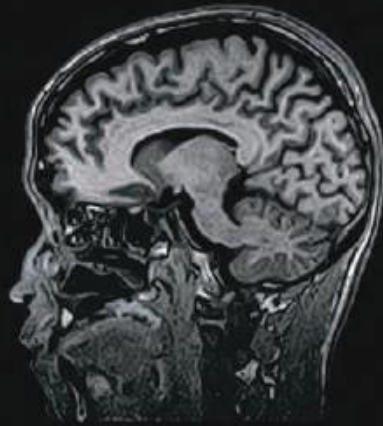


DWI

Brain 3D image

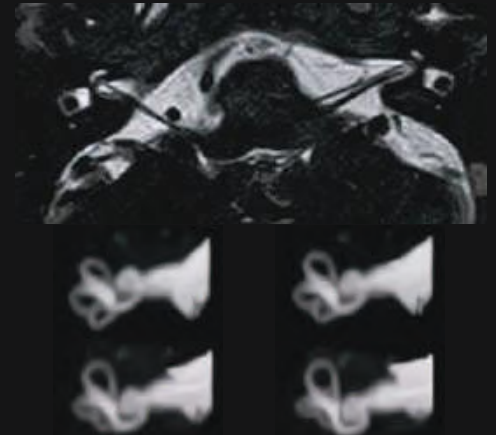


3D RSSG



3D GEIR*

I.A.C.



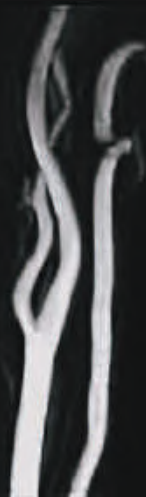
3D T2WI (Upper) / MIP (Lower)

Brain MRA [Middle cerebral artery aneurysm]



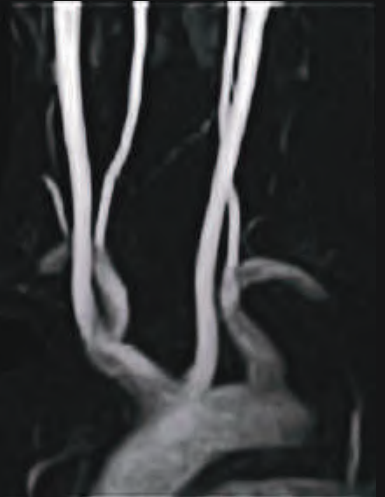
MIP (Upper) / VR* (Lower)

Neck MRA Carotid bifurcation



MIP

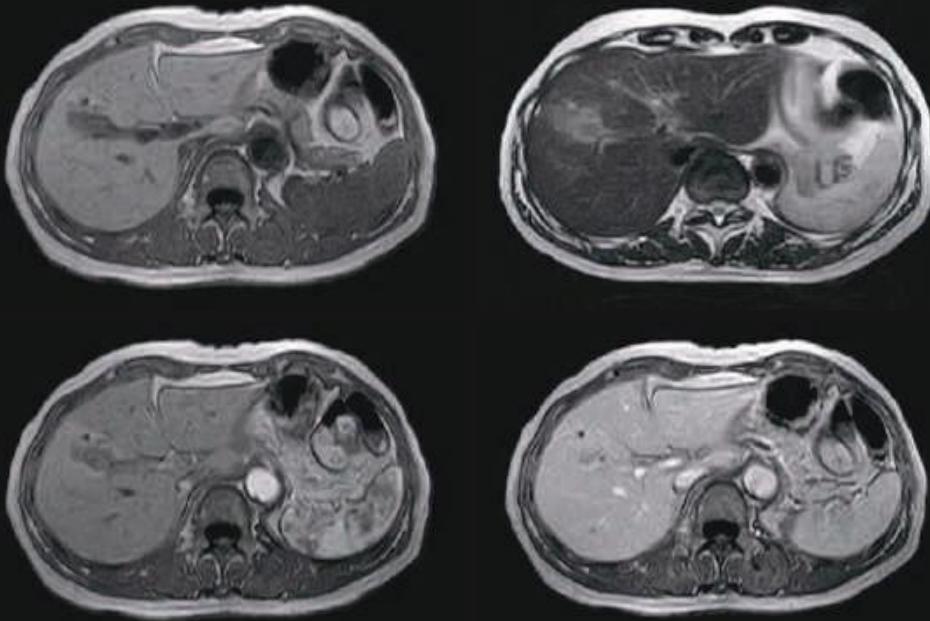
Aortic arch-Neck



MIP

APERTO Lucent Prime Open MRI

Liver(Dynamic) [Metastatic liver tumor (Gd-EOB-DTPA)]



T1WI Non CE	T2WI	
Dynamic DT=40 _{sec}	Dynamic DT=70 _{sec}	Dynamic DT=4 _{min}

* "DT" stands for "Delay Time".

MRCP [Distention of the common bile duct]



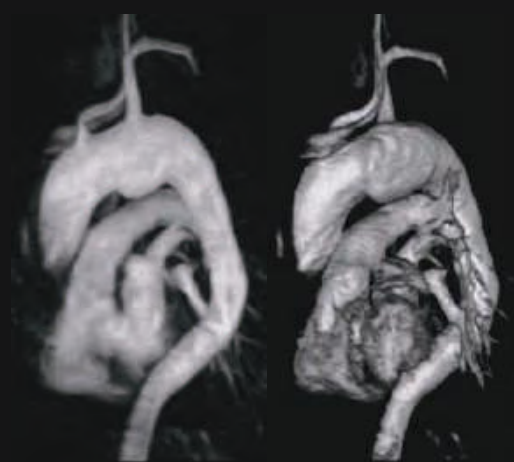
3D respiratory gating

MRCP [IPMN suspect]



2D breath hold

Thoracic MRA [Aortic aneurism]



MIP

VR[※]

Female pelvis [Uterine myoma]



T2WI

CE-T1WI

Male pelvis [Prostate cancer]



T2WI

※ Optional function

Prime imaging capabilities

Cervical spine [Neurilemoma]



T2WI



T1WI



T2WI



Myelography

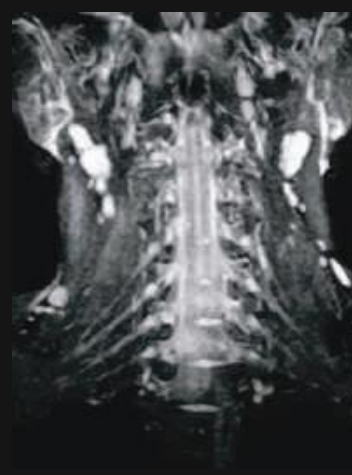
Thoracic spine [Tumor]



FatSep T2WI



FatSat* T1WI



STIR (with DE pulse)



Spine neurography

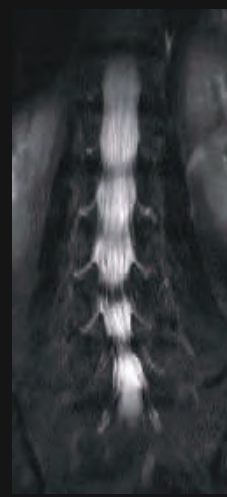
Lumbar spine [Spondylosis]



T2WI



T1WI

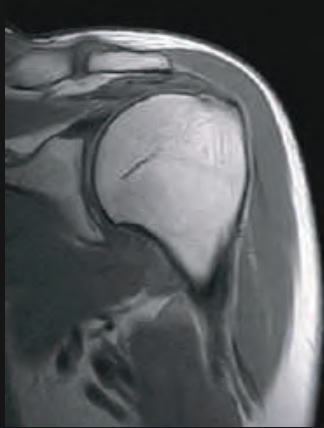


Myelography

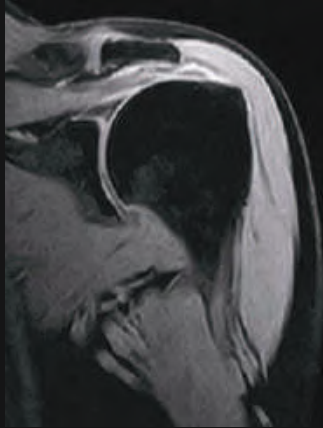


Myelography (MPR)

Shoulder [Rotator cuff injury]

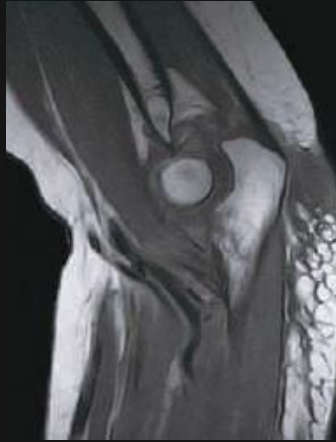


T1WI



FatSep T2*WI

Elbow [Ulnar coronoid process fracture]



T1WI



FatSep T2*WI

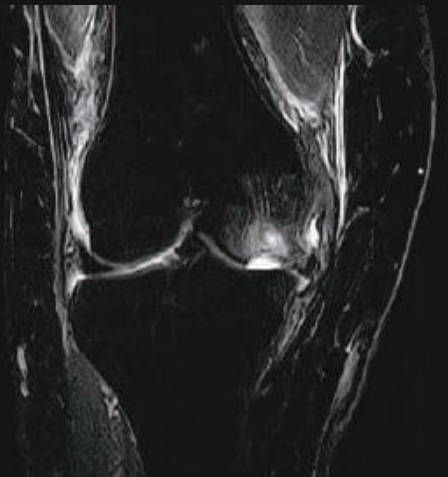
Knee [Bone necrosis]



PDWI



T2WI



FatSep T2WI

Hip joint [Femoral fracture]



T2WI



STIR

Ankle [Calcaneal fracture]

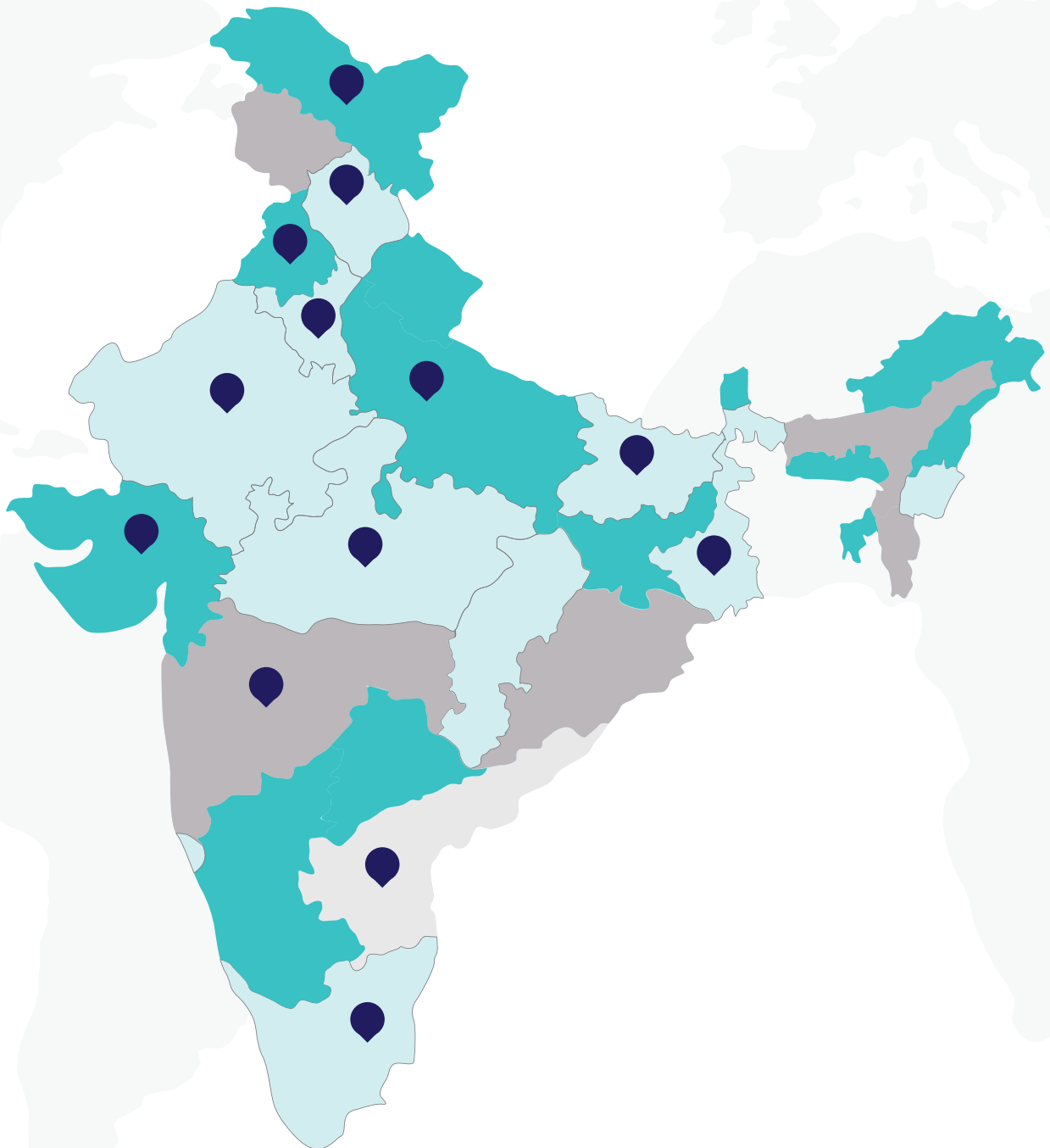


T1WI



STIR

We have Installed Our
Machines in Various
Parts of **India.**



Thank You!



Get In Touch

NH-2, Parallel to Panchayat Bhawan Banchari,
Hodal, Delhi NCR, Haryana 121106

P: +91-9560507877

E: arnicahealthtech@gmail.com

w: www.arnicahealthtech.com