



Refurbished
MAGNETOM
AVANTO

The Landmark in 1.5T imaging.

About **Arnica**

ARNICA HEALTHTECH has always been devoted to development, sales and service of medical equipment. We are not only popular in the domestic market, but we are also widely recognized across the world. With reliable quality and complete customer service, our products are popular with clients from all around the world. Our research and development wings are practicing to come up with innovative and unique medical equipment and medical supplies. We are capable of meeting the requirements of our clients. Our specialization and extensive experience in medical equipment and medical supply has propelled us to cater this product at very competitive prices. We are committed to being very aggressive in our attitude towards quality and customer service, primarily since we want to be ranked as the "best" in our business. Quality is not just another goal; it is our basic strategy for survival and future growth. It must be clearly understood that we'll not allow quality to take second place behind cost or schedule.

About **Machine**

It's the landmark in 1.5T imaging, with more than 3,000 installations worldwide. With advanced Tim® (Total imaging matrix) technology, it enables ultra-fast image acquisition. This, in turn, results in productivity that simply leaps ahead. Accompanied by a dramatic reduction in acoustic noise, without compromising gradient performance. And now, these factors are extended with Dot® (Day optimizing throughput). The next movement in MRI. MAGNETOM Avanto with Dot is helping more customers transform the way they work with MRI, by moving 1.5T imaging to the next level for fast return-on-investment and truly seamless workflow automation.



Features

- Longer service life
- Superior performance
- Excellent quality of image



Specifications



Machine Condition	Refurbished
Model Name/Number	Magnetom Avanto
Brand	Siemens
Magnetic Strength	1.5 Tesla (T)
Machine Type	Closed
Magnet Type	Supercon
Bore Size	60 cm
Application	Hospital/Diagnostic Centres
Max. Amplitude	33 mT/m
Max. Slew Rate	120 T/m/s
Minimum Order Quantity	1
Magnet Length	163 cm
Voltage	440 V
Weight	7.3 tons
Power	74 KVA
Bore size	70 cm Open Bore Design
Power Source	Electric

Applications



Neurology



Orthopedic



Pelvis



Angiography



Cardiac



Breast

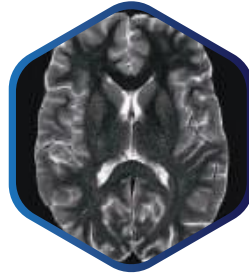


Oncology

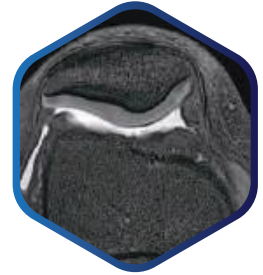


Pediatric





Neuro



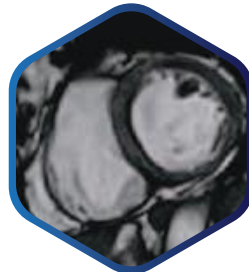
Ortho



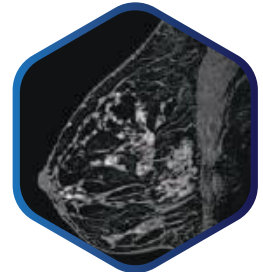
Pelvic



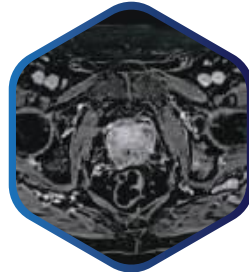
Angio



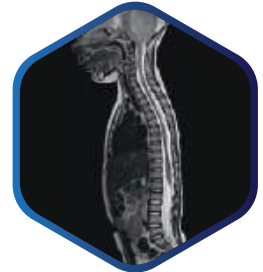
Cardiac



Breast



Onco

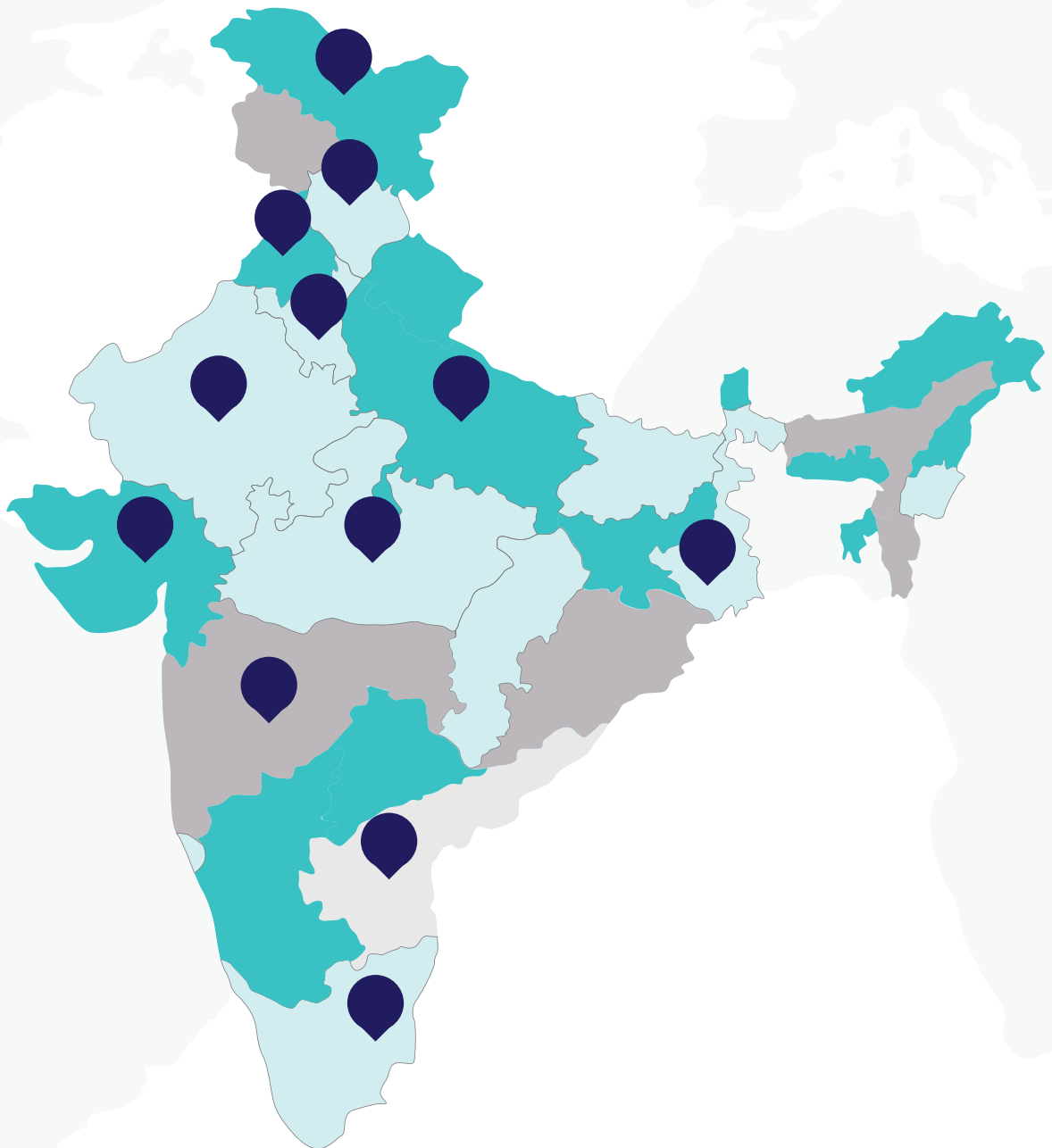


Pediatric*

Imaging



We have Installed Our
Machines in Various
Parts of **India.**



Thank You!



Get In Touch

NH-2, Parallel to Panchayat Bhawan Banchari,
Hodal, Delhi NCR, Haryana 121106

P: +91-9560507877

E: arnicahealthtech@gmail.com

w: www.arnicahealthtech.com