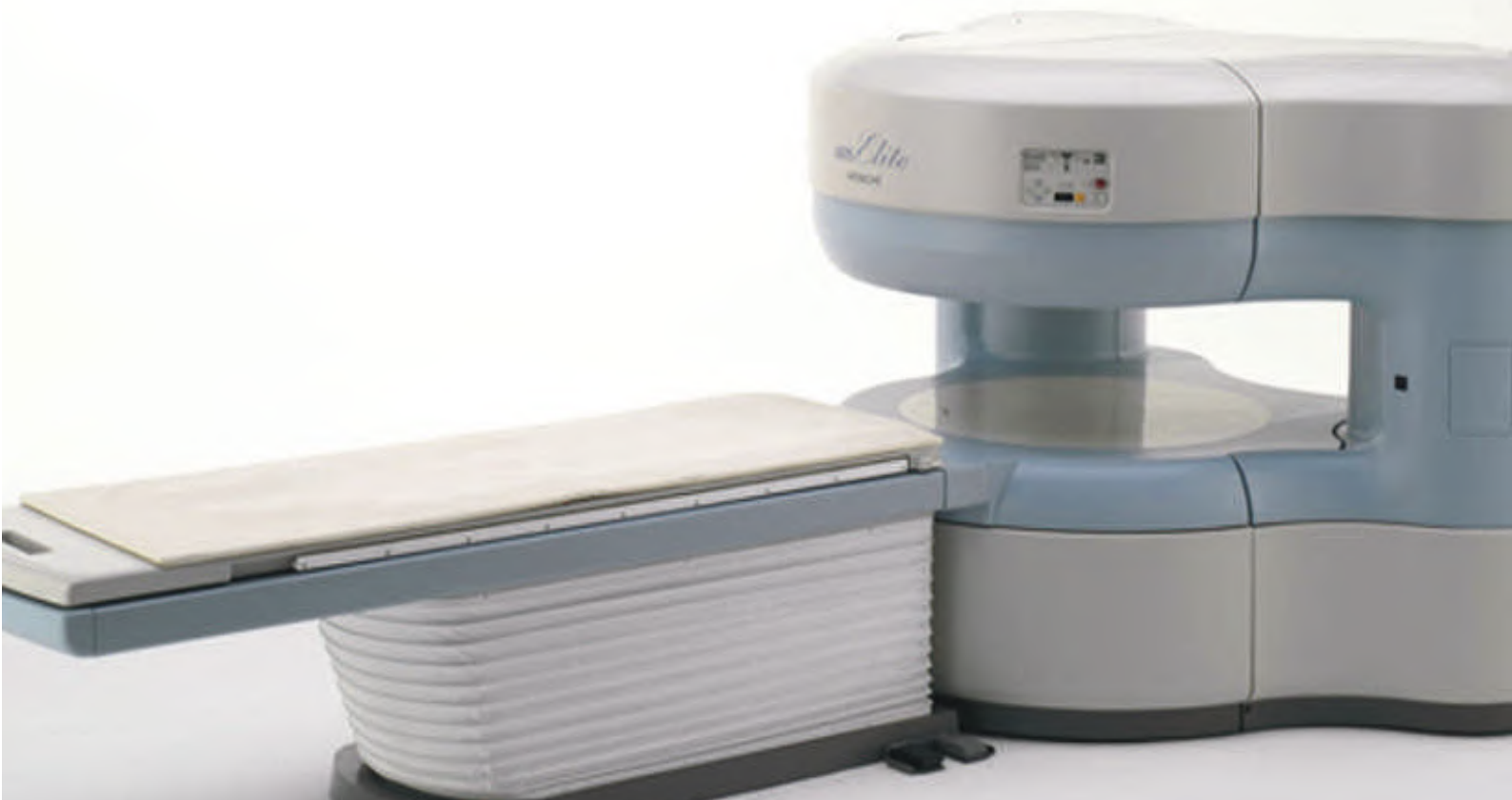




Arnica HealthTech
A Healthcare Company



Refurbished
AIRIS Elite
Advanced Midfield MRI



www.arnicahealthtech.com

About Arnica

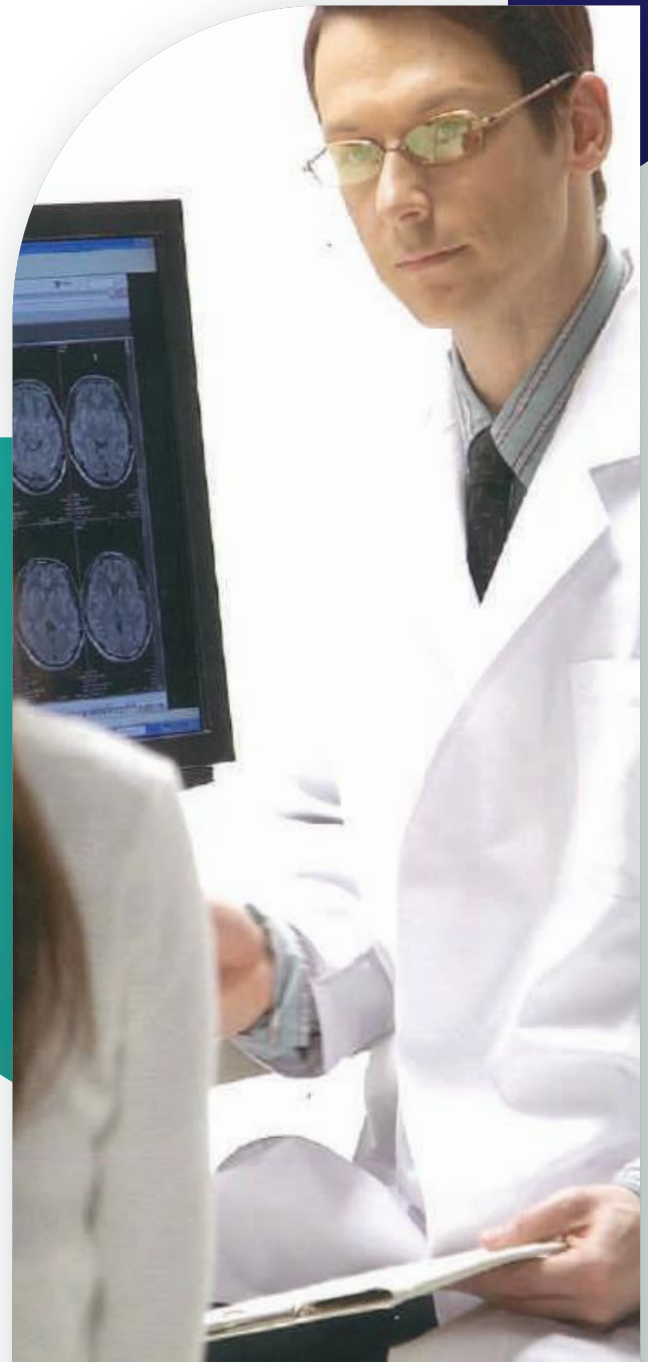
ARNICA HEALTHTECH has always been devoted to development, sales and service of medical equipment. We are not only popular in the domestic market, but we are also widely recognized across the world. With reliable quality and complete customer service, our products are popular with clients from all around the world. Our research and development wings are practicing to come up with innovative and unique medical equipment and medical supplies. We are capable of meeting the requirements of our clients. Our specialization and extensive experience in medical equipment and medical supply has propelled us to cater this product at very competitive prices.

We are committed to being very aggressive in our attitude towards quality and customer service, primarily since we want to be ranked as the "best" in our business. Quality is not just another goal; it is our basic strategy for survival and future growth. It must be clearly understood that we'll not allow quality to take second place behind cost or schedule.

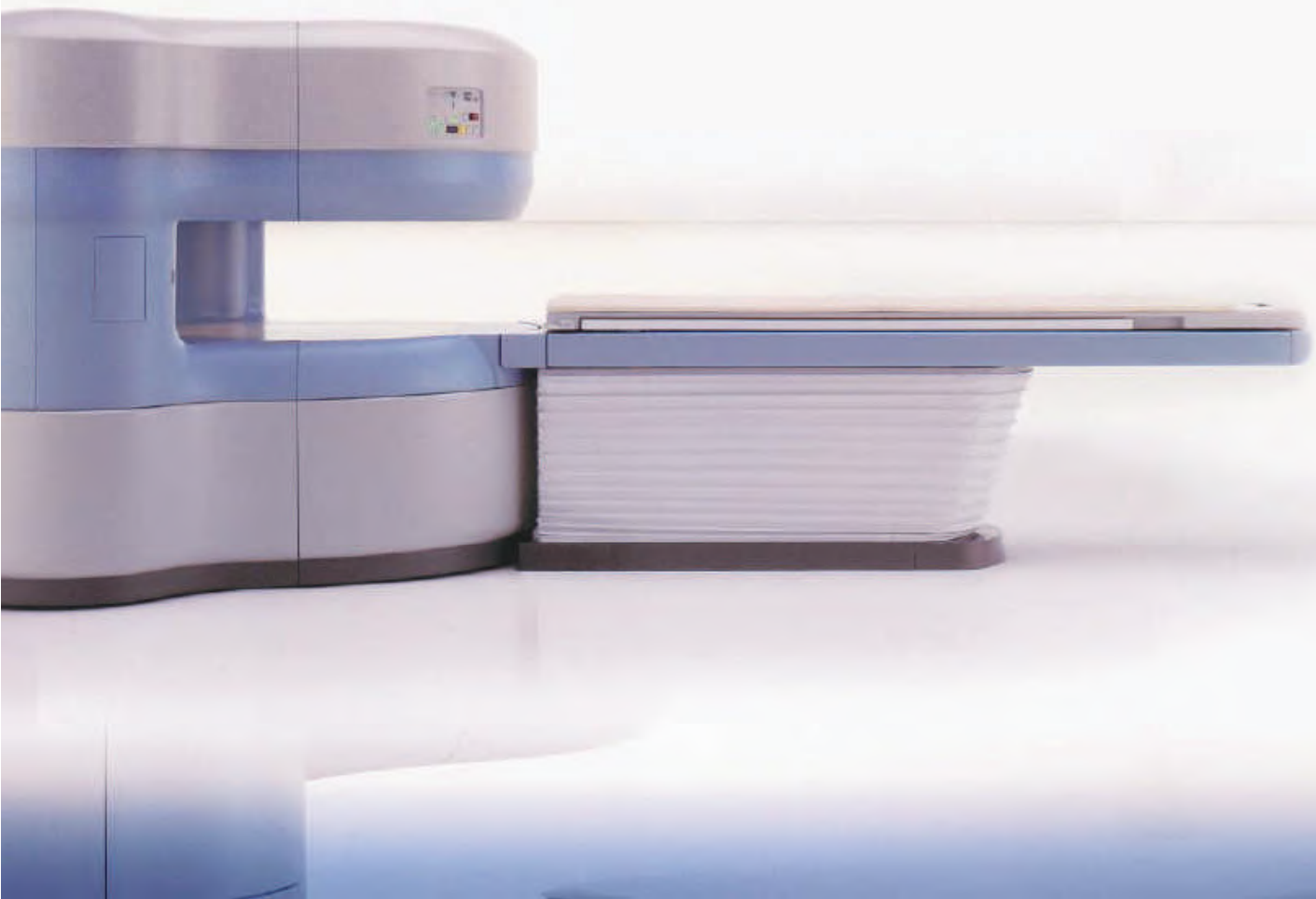
About Machine

AIRIS Elite combines the concepts of renowned reliability, patient comfort and cost-effectiveness. The proven performance of the AIRIS Elite's vertical field permanent magnet with higher-order active shim technology, scalable dual quad RF system, and broad sequence capabilities are all integrated in the AIRIS Elite, together with Hitachi's unique approach to optimising system performance.

The AIRIS Elite continued the tradition of Hitachi's leadership in open MR technology, providing new capabilities to low-field MRI, including parallel imaging and RF fat saturation.



- Asymmetric two post open architecture houses a reliable and cost-effective permanent magnet technology, delivering a 0.3T field strength in a vertical orientation with consistently high homogeneity.
- DualQuad® (SDQ) RF system. SDQ elevates multiple array RF technology to a new level, facilitating advanced applications today and setting the stage for future developments.
- Powerful Gradient System With 21mT/m maximum amplitude and 55T/m/s maximum slew rate, the powerful and fast gradients provide high resolution and low TE/TR.
- Comfort and Convenience Three-axis motorized movement, a simplified control mechanism and a number of user enhancements bring a new level of convenience and speed to patient positioning, helping to maximize patient acceptance and throughput.
- Sophisticated Computer System AIRIS Elite's Dual XP workstation features a multiprocessor computer architecture, enabling multi-tasking capabilities to increase efficiency and patient throughput.





Specifications

Support for advanced sequences like	SS-DW-EPI
Gradient Strength:	21mT/m
Slew Rate:	55T/m/s
Weight:	34,615 lbs.
Strength:	0.3 Tesla Magnet
Homogeneity:	0.4ppm@20cm DSV (FWHM)
5 Gauss Fringe Field:	6.6 ft (horz.) x 8.2 ft (vert.)

Applications



Angiography



Breast



Cardiac



Pancreatic



Pediatric



Pelvis



Neurology



Oncology



Orthopedic



Pulmonary



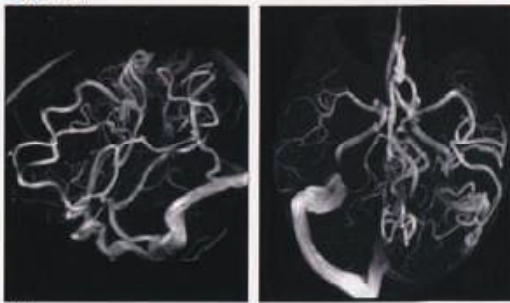
Vascular Imaging



Whole Body Imaging



●3D-TOF

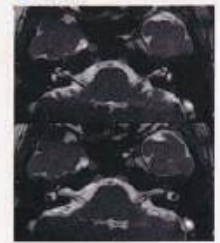


AVM

●Myelography



●BASG

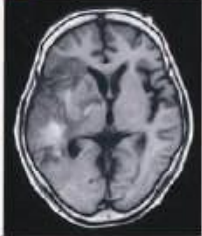


●T2-weighted image (FSE)



Hemorrhagic infarction

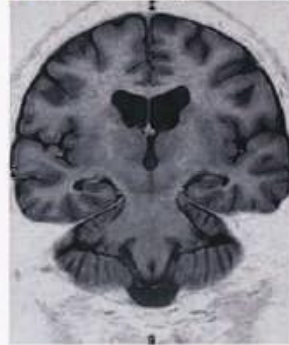
●T1-weighted image (SE)



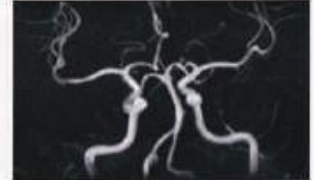
●FLAIR image



●FIR image + DE pulse



●3D-TOF

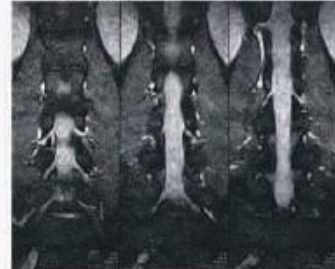


Vertebral artery aneurysm

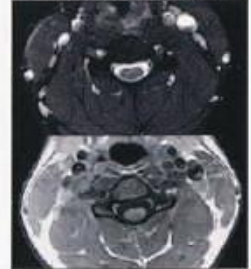
●T2-weighted image (FSE) / T1-weighted image (SE)



●Myelography / T2*weighted image (FatSep)



●T2*weighted image (GE) / T1-weighted image (SE)



●MRCP



Cholelithiasis

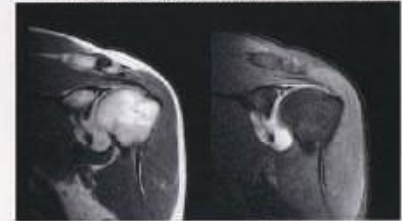
●BASG



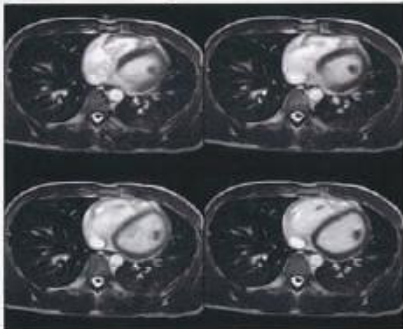
●MRCP



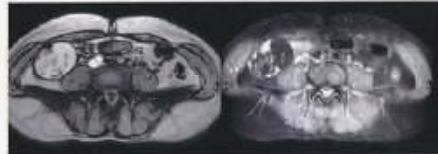
●T1-weighted image (Contrast Enhanced) / T1-weighted image (Contrast Enhanced, FatSep)



●BASG CINE image



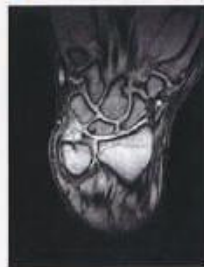
●Contrast Enhanced GE / STIR image



Ovarian tumor

Articular lip injury

●T2*weighted image (GE)



TFCC injury

●T2*weighted image (GE)



Meniscus injury

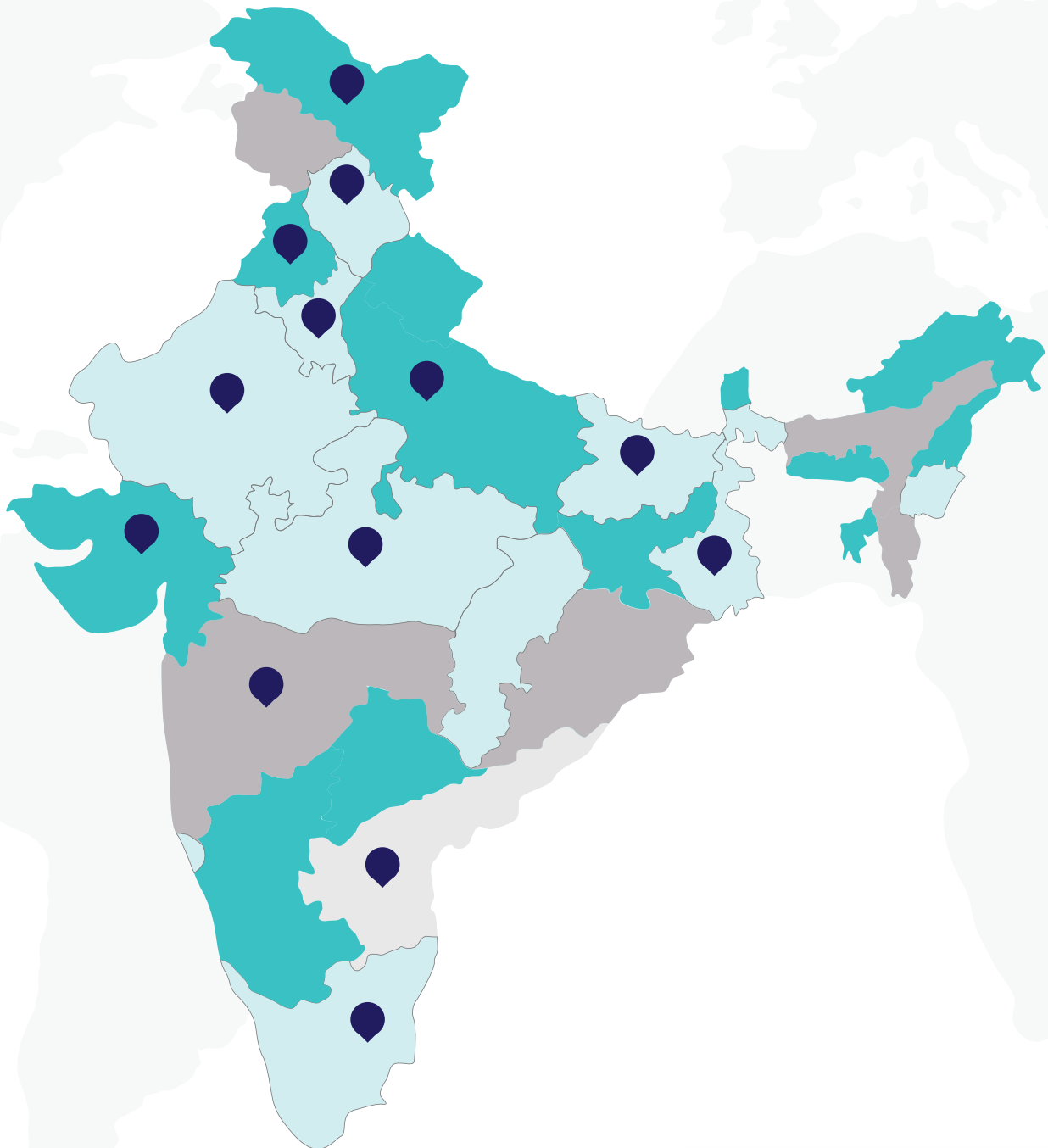
●T2-weighted image (FSE)



Calcaneus cyst

Imagging

We have Installed Our
Machines in Various
Parts of **India.**



Arnica HealthTech
A Healthcare Company

Thank You!



Arnica HealthTech
A Healthcare Company

Get In Touch

NH-2, Parallel to Panchayat Bhawan Banchari,
Hodal, Delhi NCR, Haryana 121106

P: +91-9560507877

E: arnicahealthtech@gmail.com

w: www.arnicahealthtech.com