

Refurbished  
**MAGNETOM**  
**VERIO**

Proven 3T clinical imaging

## /// About **Arnica** >>>

**ARNICA HEALTHTECH** has always been devoted to development, sales and service of medical equipment. We are not only popular in the domestic market, but we are also widely recognized across the world. With reliable quality and complete customer service, our products are popular with clients from all around the world. Our research and development wings are practicing to come up with innovative and unique medical equipment and medical supplies. We are capable of meeting the requirements of our clients. Our specialization and extensive experience in medical equipment and medical supply has propelled us to cater this product at very competitive prices.

We are committed to being very aggressive in our attitude towards quality and customer service, primarily since we want to be ranked as the "best" in our business. Quality is not just another goal; it is our basic strategy for survival and future growth. It must be clearly understood that we'll not allow quality to take second place behind cost or schedule.

## /// About **Machine** >>>

**The Siemens Magnetom Verio MRI** is a state-of-the-art magnetic resonance imaging system designed to provide high-quality imaging results with exceptional patient comfort. This advanced MRI system combines cutting-edge technology and innovative features to deliver accurate diagnoses while ensuring a positive patient experience.

The Magnetom Verio features a powerful 3 Tesla magnet, offering enhanced signal strength and superior image resolution. It employs Tim® (Total Imaging Matrix) technology, enabling faster scanning times and improved image quality by utilizing multiple receiver channels simultaneously.



# Features >>>

**3T Field Strength :** The 3T field strength of the Verio MRI provides superior image quality, which can be helpful for diagnosing a variety of conditions.

**Large Bore :** The large bore of the Verio MRI makes it comfortable for patients of all sizes, and it can accommodate patients who are claustrophobic.

**Advanced Features :** The Verio MRI has a number of advanced features that improve image quality and reduce scan time.

**Tim Technology :** Tim technology provides high-quality images with a shorter scan time.

**Dot Technology :** Dot technology automates the MRI workflow, which can help to improve patient throughput

**Enabling Efficient Data Sharing And Archiving.**

**Allowing Seamless Integration With Other Imaging Systems.**

**Quantitative Analysis.**

**Comprehensive Evaluation Of Complex Clinical Cases.**

**Provide Uniform And Consistent RF Distribution**

**User-Friendly Interfaces**



# Specifications

**Field strength 3T**

**Bore size 70 cm**

**Open Bore design**

**Magnet length 163 cm**

**System length 173 cm**

**System weight  
(in operation) 8.2 tons**

**Minimum room size  
33 m<sup>2</sup> / 355 sq. ft.**

**RF Tim [102x18],  
[102x32]**

**Gradient strength VQ-engine  
(45 mT/m @ 200 T/m/s)**

MAGNETOM Verio  
A Tim+Dot System

SIEMENS



# Application



## Neuroimaging



## Musculoskeletal Imaging



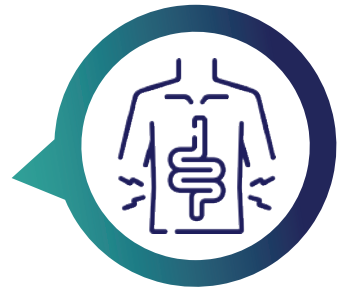
## Functional Imaging



## Vascular Imaging



## Abdominal Imaging



## Pediatric Imaging



## Cardiac Imaging

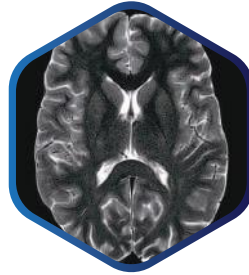


## Whole-Body Imaging

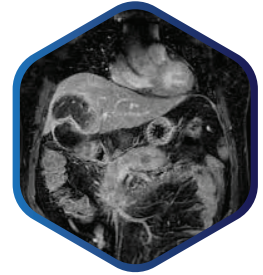


## Breast Imaging

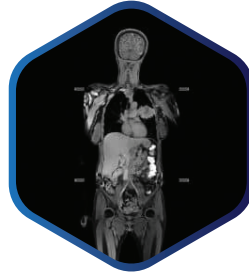




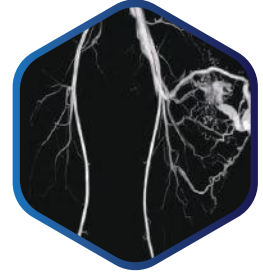
Neuro



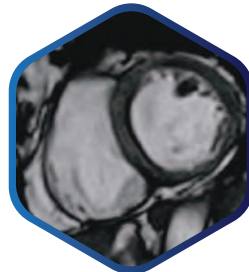
Abdominal



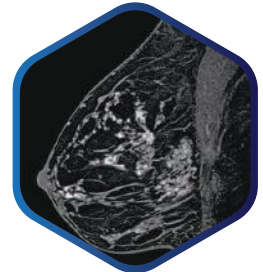
Whole Body



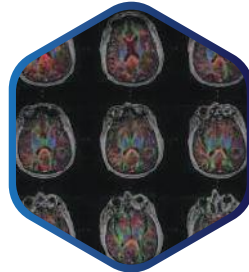
Vascular



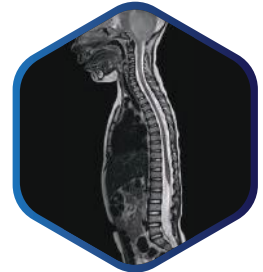
Cardiac



Breast



Functional

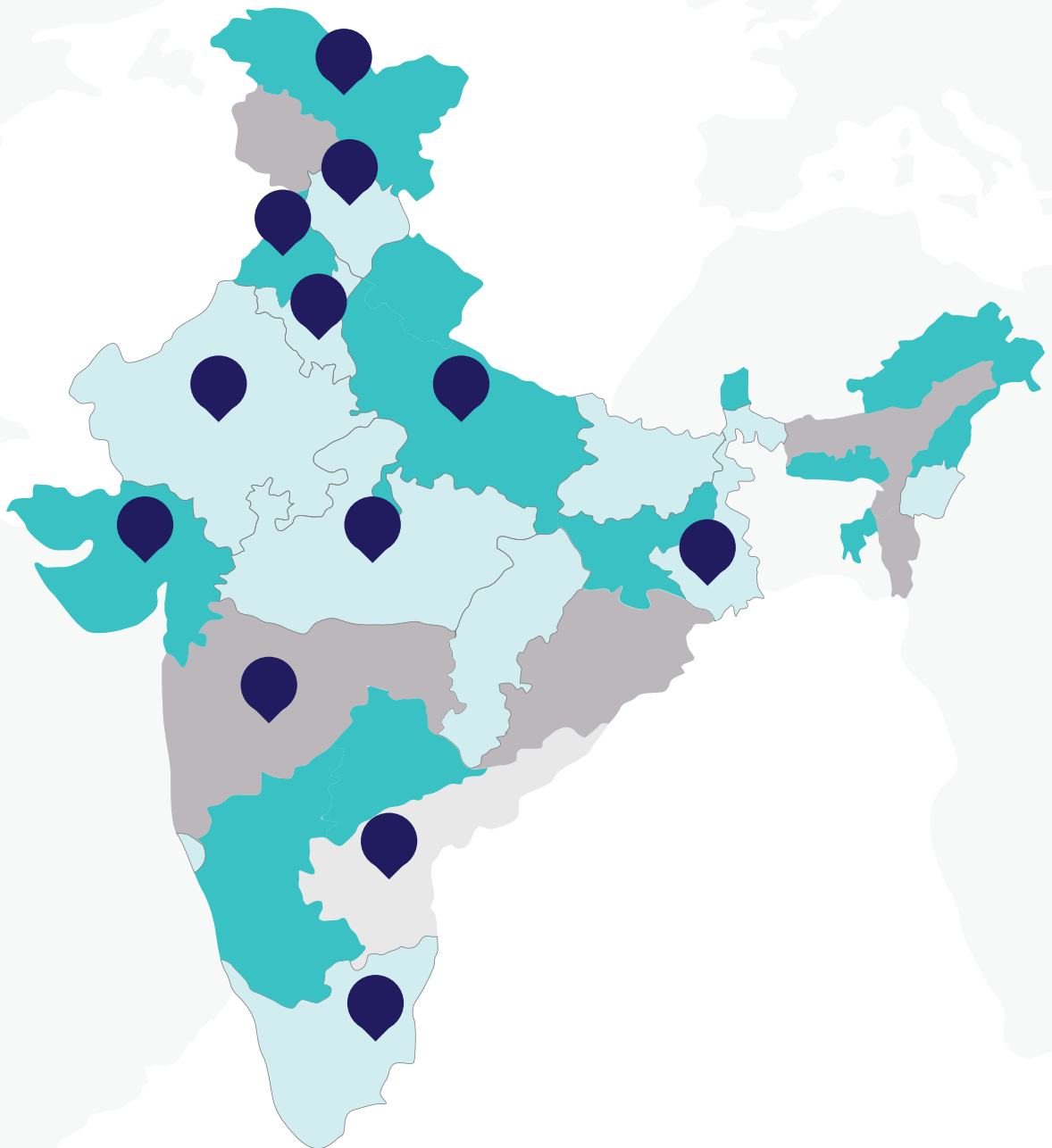


Pediatric\*



**Imaging**

We have Installed Our  
**Machines** in Various  
Parts of **India.**



# Thank You!



## Get In Touch

---

NH-2, Parallel to Panchayat Bhawan Banchari,  
Hodal, Delhi NCR, Haryana 121106

**P:** +91-9560507877

**E:** [arnicahealthtech@gmail.com](mailto:arnicahealthtech@gmail.com)

**w:** [www.arnicahealthtech.com](http://www.arnicahealthtech.com)